



Access to Resources in the Community

December 2018 Newsletter

What is ARC?

A research study that aims to optimize equitable Access to Resources in the Community for primary care patients.

Who is participating?

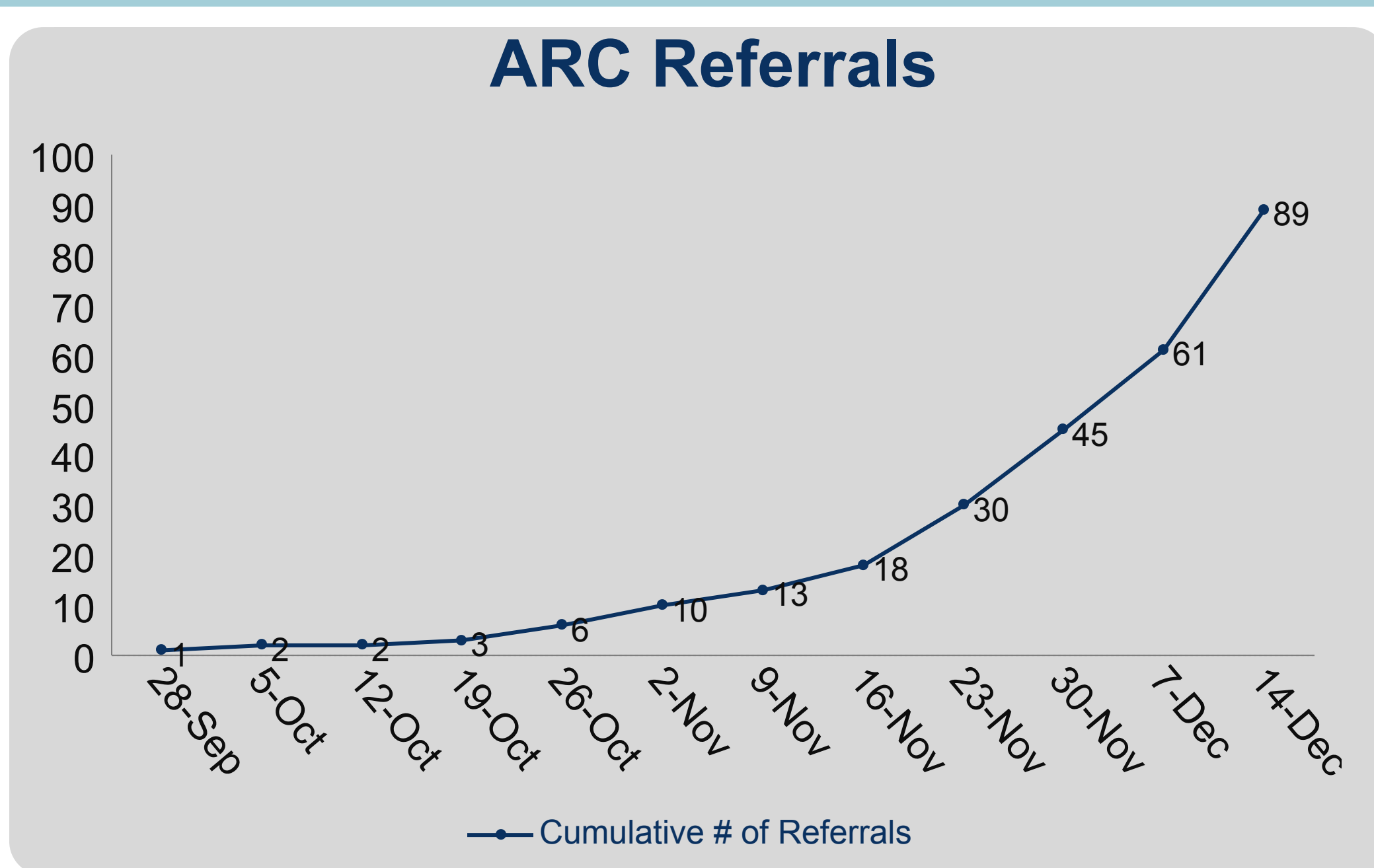
7 Primary care practices



33 Primary care providers

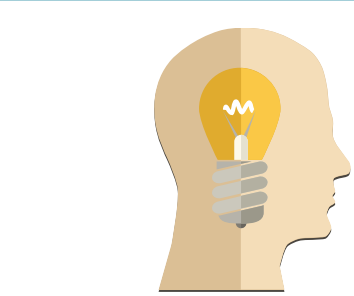


How many referrals have we received?

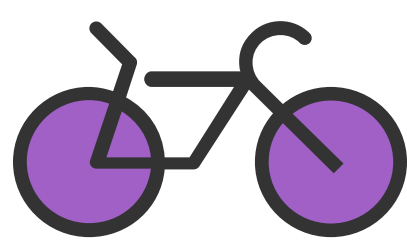


*Due to the holiday season, new referrals received between December 19th, 2018 and January 4th, 2019 will only be contacted as of January 7th, 2019.

What are common patient needs?



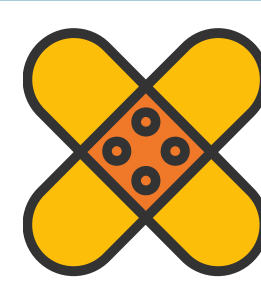
Mental Health



Physical Activity



Healthy Eating



Chronic Pain



Family Support

How can patients participate?

Step 1: You and your patient **identify** their health and social needs

Step 2: You **complete the ARC Referral Form** and **fax a copy** to the research team

Step 3: You **give the patient** a copy of their **Referral Form** and a **Study Information Package** (brown envelope)



What happens after?

The ARC Research Assistant contacts the patient to explain the study and administer a telephone survey



The patient is randomized to one of two groups:

1 CONTROL GROUP



Receives information to access the Ontario 211 web and telephone navigation services

2 INTERVENTION GROUP



Can access the services of the ARC Patient Navigator offered in person or by telephone

Questions? Contact us:

Simone Dahrouge, PhD
ARC Principal Investigator
sdahrouge@bruyere.org

Andrea Perna, PhD
ARC Study Coordinator
aperna@bruyere.org

